

Planning Guide

DELTA

Commercial Dumbwaiter

Sample information only

Table of content

Introduction & Planning Steps.....	2-3
Dumbwaiter Landing Door Chart.....	4
Car Gate Information	5
Hoistway Layout- Planview In-line Counter loading.....	6
Hoistway Layout- Section view In-line Counter loading.....	7
Hoistway Layout -ON/OFF Opposite Side Counter loading.....	8
Hoistway Layout- Section View ON/OFF opposite Counter loading.....	9
Hoistway Layout Planview In-line Floor loading.....	10
Hoistway Layout- Section view In-line Floor loading.....	11
Hoistway Layout -ON/OFF Opposite Side Floor loading.....	12
Hoistway Layout- Section View ON/OFF opposite Floor loading.....	13
Hoistway Rail Attachment Layout.....	14-16
Electrical Layout.....	17
Door Attachment Layout counter loading.....	18
Door Attachment Layout Floor Loading	19

Introduction

This Planning Guide is to be used as a reference to determine parameters of installation and steps taken to achieve a proper dumbwaiter installation. This guide may be used by the architect, contractor, dealer or Building/home owner. The information in this guide is intended as an overview. Each installation will have job specific specifications that must be followed. Do not attempt to construct a hoistway on this information.

Dumbwaiter installation is to be done by an authorized elevator contractor, and in accordance with installation instructions provided by the manufacturer. Installation must also be in compliance with requirements of the National Electric Code, Canadian Standards Association (CSA)/American Society of Mechanical Engineers safety code, and province /state and local building codes.

Our Dumbwaiter products are designed to meet the requirements of CSA B44/ASME - 17.1 National Elevator Codes for dumbwaiters. dumbwaiters manufactured and installed under the proper parameters are under warranty for 2 years. Manufacturer assumes no liability for equipment not installed in compliance with these codes.

CITI Elevator Inc., reserves the right to modify the design, technical specifications and dimensions of the products shown in this document.

Planning Steps

Determine the following:

- A - Select weight capacity, car type and design specifications
- B - Address national, state and local code requirements
- C - Hoistway size
- D - Car size, layout and options
- E - Machine location (controller, disconnect)
- F - Electrical requirements
- H. - Obtain and follow site specific field drawings while building hoistway, doorways and any other construction related to the dumbwaiter.
- G. - Coordinate with Install as to provision by others to install the dumbwaiter.

Notes:

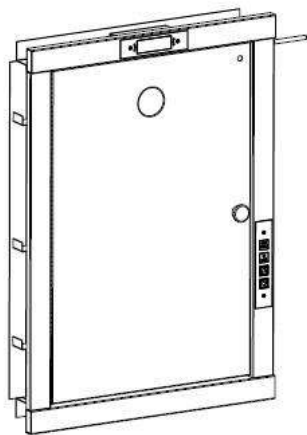
Dumbwaiter to be installed in accordance with CSA/ASME B44/A17.1 Part 7.1, 7.2, and all local codes.

- Electrical room must meet N.E.C. clear space requirements and all local codes. Temperature in machine room to be maintained between 15C- 43C (60-110° F) and must not be exposed to the elements.
 - All hoistway doors require an interlock, door handle, and latch set.
 - Any alterations to the equipment without written authorization will void all warranties.
 - Hoistway must be plum within 1/8 inch per 10 ft of height and square at any point within 1/4 inch based on difference in diagonal measurements.
 - Structure must be capable of supporting the appropriate loads. Local engineering support is recommended.
 - Do not complete door and associated framing to one door (preferably at grade level), until dumbwaiter is completely installed.
 - The following hoistway illustrations are showing finished dimensions. Finished hoistway dimensions include drywall, plaster, and paint.
 - The following information represented for DELTA commercial (C) units.
- Note the appropriate application when considering a dumbwaiter.

Commercial Dumbwaiter Fire Rate (FR) door types:

The door prevents items from accidentally entering the hoistway when the dumbwaiter car is elsewhere. An interlock located at each opening prevents the door from being opened if the dumbwaiter car is not waiting at that landing. We offer the following doors made to your specification. Every opening must have a door.

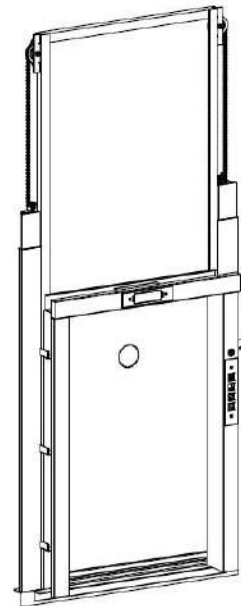
Swing Door (FR)



Bi- Parting Door (FR)



Slid UP Door (FR)



Specification:

Size: 20", 24", 30", 36" Wide

20", 24, 30", 36, 42" High

Finish: Prime Steel or Stainless Steel

Capacity: 200lbs to 500bs

Fire Rating (FR): Up to 1.5 UL/ULC

CONSTRUCTION/INSTALLATION NOTE!

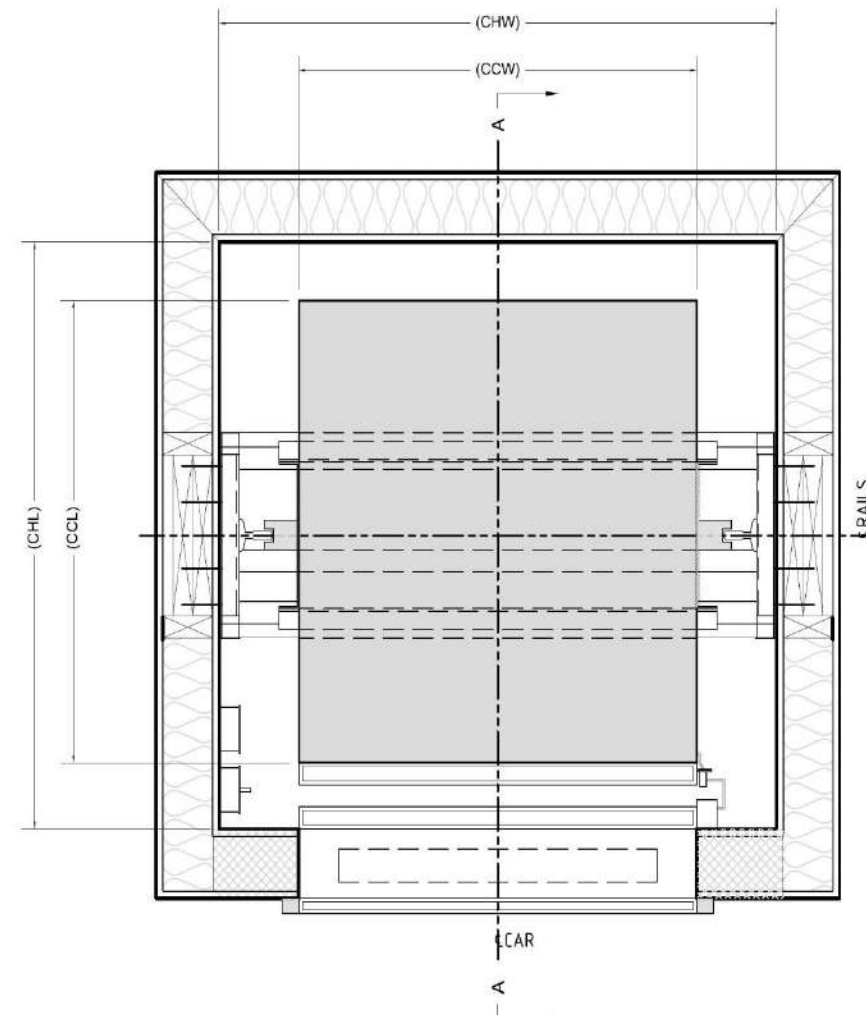
Hoistway door walls (returns) must not be erected until doors are set in place.

Dumbwaiter Car Gate

The dumbwaiter car gate, is attached to the front of the car and travels with it up and down the hoistway. The gate prevents items from leaving or entering the car. Car gates are matched to the type of landing doors supplied for the project.

DELTA-C COMMERCIAL DUMBWAITER - INLINE COUNTER LOADING

PLAN VIEW: STYLE ONE COUNTER LOADING



STANDARD MODEL - PLATFORM AND HOISTWAY INFORMATION

MODEL	PLATFORM WIDTH (CCW)	PLATFORM LENGTH (CCL)	HOISTWAY WIDTH (CHW)	HOISTWAY LENGTH (CHL)	CAB HEIGHT
DW-S1.CL-202030	20" (508mm)	20" (508mm)	32" (813mm)	27" (686mm)	30" (762mm)
DW-S1.CL-242430	24" (610mm)	24" (610mm)	36" (915mm)	31" (787mm)	30" (762mm)
DW-S1.CL-303030	30" (762mm)	30" (762mm)	42" (1067mm)	37" (940mm)	30" (762mm)
DW-S1.CL-363636	36" (915mm)	36" (915mm)	48" (1219mm)	43" (1092mm)	36" (915mm)
DW-S1.CL-364236	36" (915mm)	42" (1067mm)	42" (1067mm)	49" (1245mm)	36" (915mm)
DW-S1.CL-363648	36" (915mm)	36" (915mm)	48" (1219mm)	43" (1092mm)	48" (1218mm)
CUSTOM					

CUSTOM SIZES ALSO AVAILABLE. PLEASE CONTACT FOR MORE INFORMATION. LAYOUT IS FOR SAMPLE PURPOSES ONLY

Notes:

••••NOT FOR CONSTRUCTION PURPOSES. ALL INFORMATION SUBJECT TO CHANGE, CONTACT FOR MOST UP TO DATE INFORMATION••••

SPECIFICATIONS

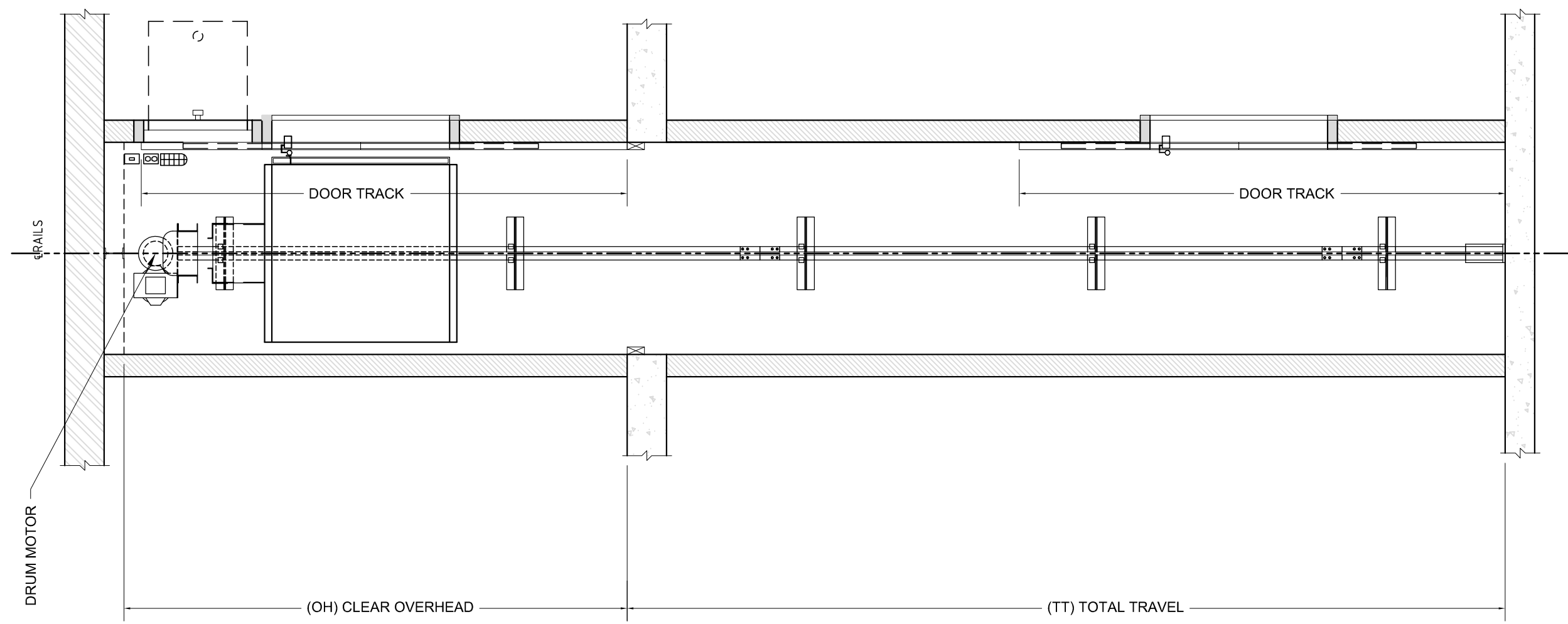
CODE COMPLIANCE:
B44/ASME A17.1
MAXIMUM CAPACITY:
UP TO 500lbs (227 Kg)
MAXIMUM PLATFORM SIZE:
1 CUBIC METER / 35.32 CUBIC FEET
MAXIMUM TRAVEL (T):
22 FEET (6.7m)
LOADING HEIGHT:
36" (915mm) STANDARD
MINIMUM OVERHEAD REQUIRED (OH):
REQUEST INFORMATION
MAXIMUM TRAVEL SPEED:
30 ft./min (0.15m/s)
DRIVE:
ROLLER CHAIN
LANDING DOOR TYPE:
VERTICAL BI-PARTING
DOOR FINISH OPTIONS:
STAINLESS STEEL/PAINTED STEEL
CAB FINISH OPTIONS:
STAINLESS STEEL/PAINTED STEEL
HOISTWAY CONTRUCTION TYPE:
STUD AND DRYWALL/CONCRETE/MASONRY
ADDITIONAL FEATURES:
1 SHELF INCLUDED

FOR INFORMATION AND SALES CONTACT:

CITI ELEVATOR INC.

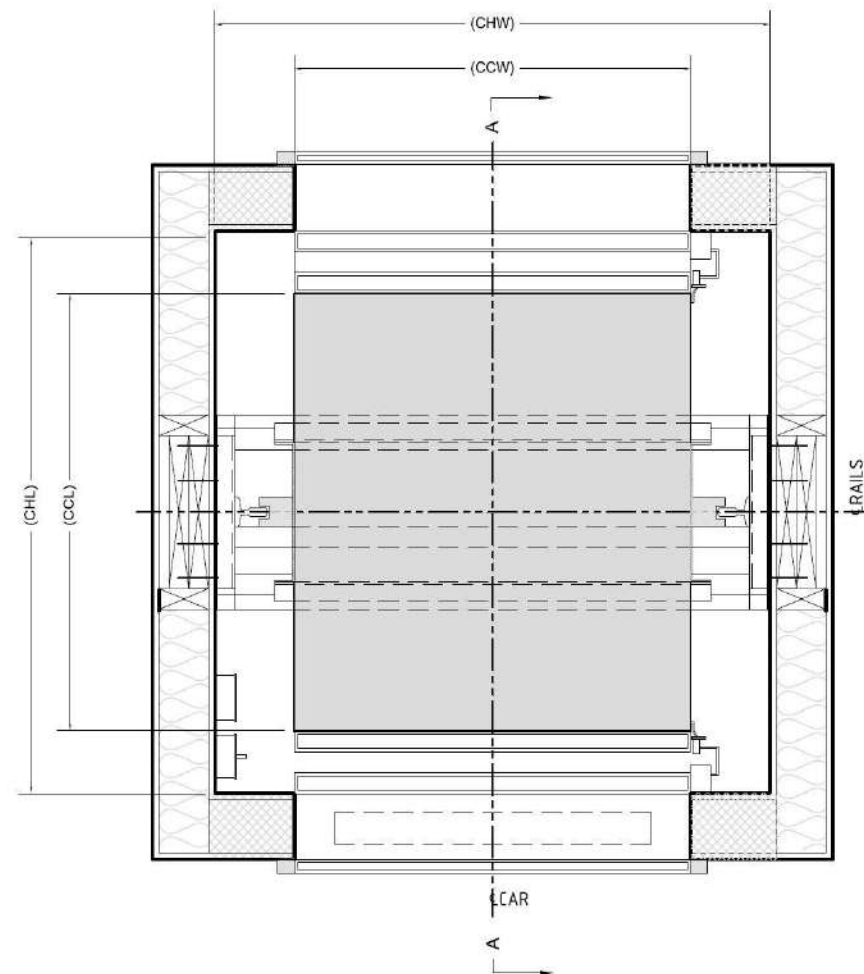
WEB: WWW.CITIELEVATOR.COM
EMAIL: SALES.INFO@CITIELEVATOR.COM
USA: (716) 513 - 9535
CAN: (416) 900 - 6974





DELTA-C COMMERCIAL DUMBWAITER - THRU CAR COUNTER LOADING

PLAN VIEW: STYLE TWO COUNTER LOADING



STANDARD MODEL - PLATFORM AND HOISTWAY INFORMATION

MODEL	PLATFORM WIDTH (CCW)	PLATFORM LENGTH (CCL)	HOISTWAY WIDTH (CHW)	HOISTWAY LENGTH (CHL)	CAB HEIGHT
DW-S2.CL-202030	20" (508mm)	20" (508mm)	32" (813mm)	29" (737mm)	30" (762mm)
DW-S2.CL-242430	24" (610mm)	24" (610mm)	36" (915mm)	33" (838mm)	30" (762mm)
DW-S2.CL-303030	30" (762mm)	30" (762mm)	42" (1067mm)	39" (981mm)	30" (762mm)
DW-S2.CL-363636	36" (915mm)	36" (915mm)	48" (1219mm)	45" (1143mm)	36" (915mm)
DW-S2.CL-364236	36" (915mm)	42" (1067mm)	42" (1067mm)	51" (1295mm)	36" (915mm)
DW-S2.CL-363648	36" (915mm)	36" (915mm)	48" (1219mm)	45" (1143mm)	48" (1218mm)
CUSTOM					

CUSTOM SIZES ALSO AVAILABLE. PLEASE CONTACT FOR MORE INFORMATION. LAYOUT IS FOR SAMPLE PURPOSES ONLY

Notes:

••••NOT FOR CONSTRUCTION PURPOSES. ALL INFORMATION SUBJECT TO CHANGE, CONTACT FOR MOST UP TO DATE INFORMATION••••

SPECIFICATIONS

CODE COMPLIANCE:
B44/ASME A17.1
MAXIMUM CAPACITY:
UP TO 500lbs (227 Kg)
MAXIMUM PLATFORM SIZE:
1 CUBIC METER / 35.32 CUBIC FEET
MAXIMUM TRAVEL (T):
22 FEET (6.7m)
LOADING HEIGHT:
36" (915mm) STANDARD
MINIMUM OVERHEAD REQUIRED (OH):
REQUEST INFORMATION
MAXIMUM TRAVEL SPEED:
30 ft./min (0.15m/s)
DRIVE:
ROLLER CHAIN
LANDING DOOR TYPE:
VERTICAL BI-PARTING
DOOR FINISH OPTIONS:
STAINLESS STEEL/PAINTED STEEL
CAB FINISH OPTIONS:
STAINLESS STEEL/PAINTED STEEL
HOISTWAY CONTRUCTION TYPE:
STUD AND DRYWALL/CONCRETE/MASONRY
ADDITIONAL FEATURES:
1 SHELF INCLUDED

FOR INFORMATION AND SALES CONTACT:

CITI ELEVATOR INC.

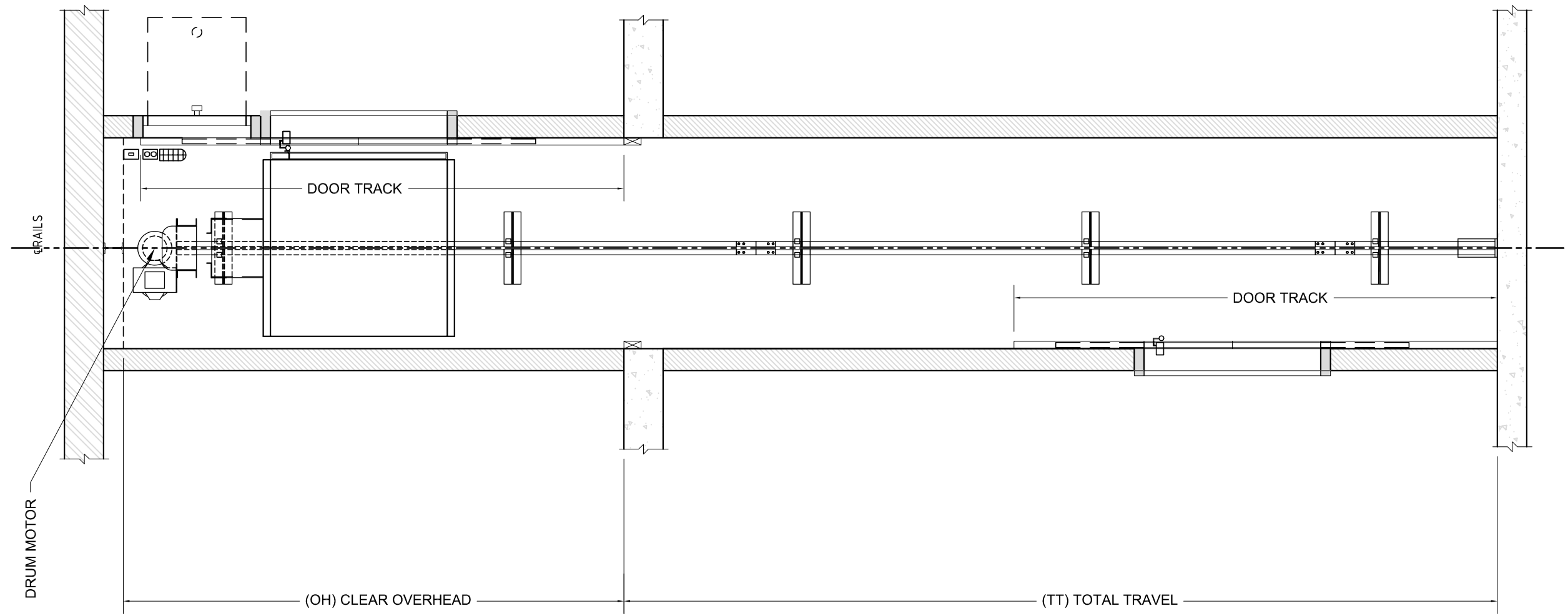
WEB: WWW.CITIELEVATOR.COM

EMAIL: SALES.INFO@CITIELEVATOR.COM

USA: (716) 513 - 9535

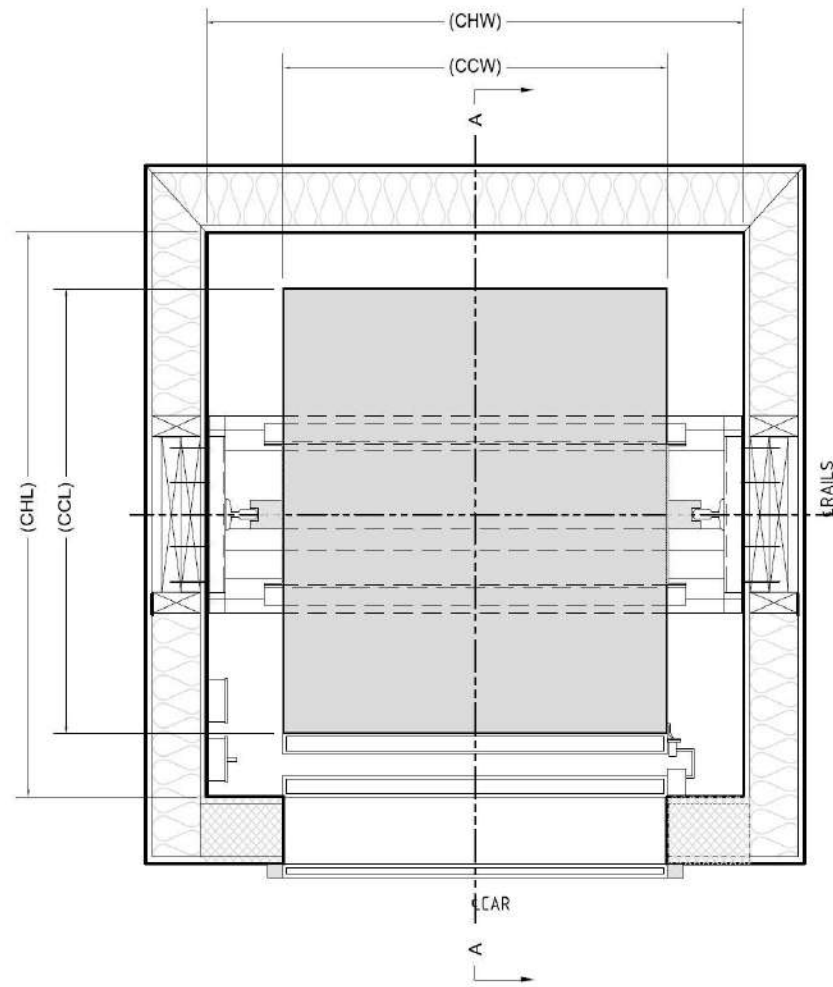
CAN: (416) 900 - 6974





DELTA-C COMMERCIAL DUMBWAITER - INLINE FLOOR LOADING

PLAN VIEW: STYLE ONE FLOOR LOADING



STANDARD MODEL - PLATFORM AND HOISTWAY INFORMATION

MODEL	PLATFORM WIDTH (CCW)	PLATFORM LENGTH (CCL)	HOISTWAY WIDTH (CHW)	HOISTWAY LENGTH (CHL)	CAB HEIGHT
DW-S1.FL-202030	20" (508mm)	20" (508mm)	32" (813mm)	27" (686mm)	30" (762mm)
DW-S1.FL-242430	24" (610mm)	24" (610mm)	36" (915mm)	31" (787mm)	30" (762mm)
DW-S1.FL-303030	30" (762mm)	30" (762mm)	42" (1067mm)	37" (940mm)	30" (762mm)
DW-S1.FL-363636	36" (915mm)	36" (915mm)	48" (1219mm)	43" (1092mm)	36" (915mm)
DW-S1.FL-364236	36" (915mm)	42" (1067mm)	42" (1067mm)	49" (1245mm)	36" (915mm)
DW-S1.FL-363648	36" (915mm)	36" (915mm)	48" (1219mm)	43" (1092mm)	48" (1218mm)
CUSTOM					

CUSTOM SIZES ALSO AVAILABLE. PLEASE CONTACT FOR MORE INFORMATION. LAYOUT IS FOR SAMPLE PURPOSES ONLY

Notes:

••••NOT FOR CONSTRUCTION PURPOSES. ALL INFORMATION SUBJECT TO CHANGE, CONTACT FOR MOST UP TO DATE INFORMATION••••

SPECIFICATIONS

CODE COMPLIANCE:
B44/ASME A17.1
MAXIMUM CAPACITY:
UP TO 500lbs (227 Kg)
MAXIMUM PLATFORM SIZE:
1 CUBIC METER / 35.32 CUBIC FEET
MAXIMUM TRAVEL (T):
22 FEET (6.7m)
PIT DEPTH (P):
30" (762mm) MINIMUM
MINIMUM OVERHEAD REQUIRED (OH):
REQUEST INFORMATION
MAXIMUM TRAVEL SPEED:
30 ft./min (0.15m/s)
DRIVE:
ROLLER CHAIN
LANDING DOOR TYPE:
VERTICAL BI-PARTING
DOOR FINISH OPTIONS:
STAINLESS STEEL/PAINTED STEEL
CAB FINISH OPTIONS:
STAINLESS STEEL/PAINTED STEEL
HOISTWAY CONTRUCTION TYPE:
STUD AND DRYWALL/CONCRETE/MASONRY
ADDITIONAL FEATURES:
1 SHELF INCLUDED

FOR INFORMATION AND SALES CONTACT:

CITI ELEVATOR INC.

WEB: WWW.CITIELEVATOR.COM

EMAIL: SALES.INFO@CITIELEVATOR.COM

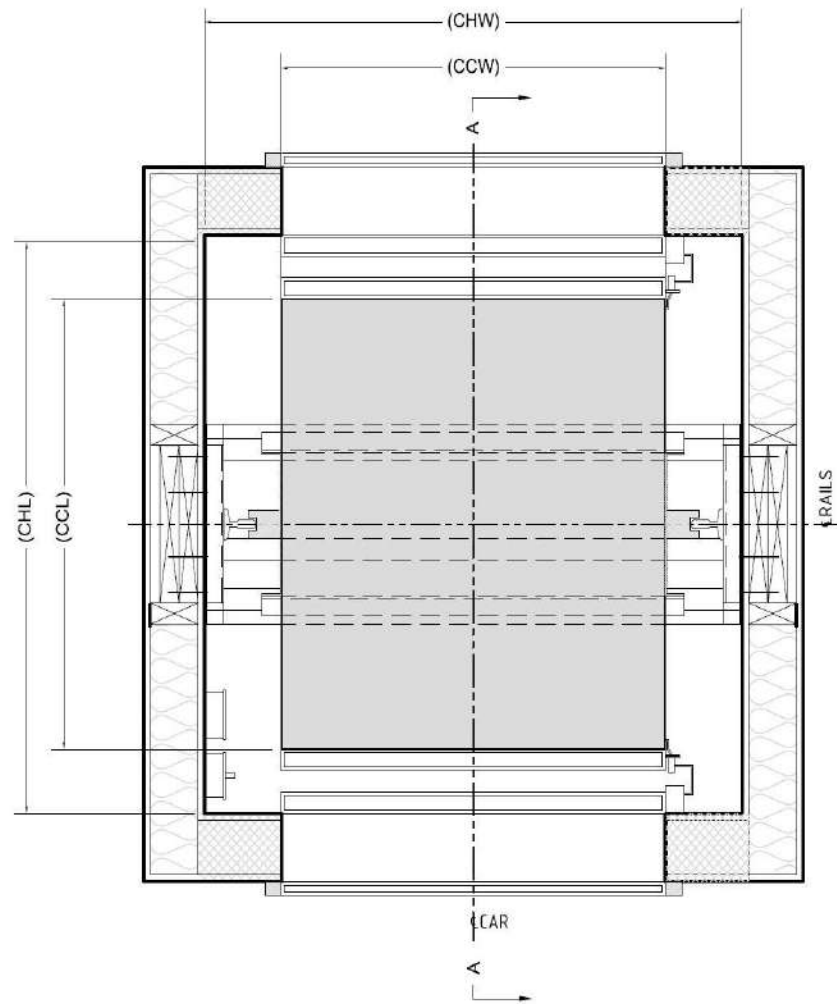
USA: (716) 513 - 9535

CAN: (416) 900 - 6974



DELTA-C COMMERCIAL DUMBWAITER - THRU CAR FLOOR LOADING

PLAN VIEW: STYLE TWO FLOOR LOADING



STANDARD MODEL - PLATFORM AND HOISTWAY INFORMATION

MODEL	PLATFORM WIDTH (CCW)	PLATFORM LENGTH (CCL)	HOISTWAY WIDTH (CHW)	HOISTWAY LENGTH (CHL)	CAB HEIGHT
DW-S2.FL-202030	20" (508mm)	20" (508mm)	32" (813mm)	29" (737mm)	30" (762mm)
DW-S2.FL-242430	24" (610mm)	24" (610mm)	36" (915mm)	33" (838mm)	30" (762mm)
DW-S2.FL-303030	30" (762mm)	30" (762mm)	42" (1067mm)	39" (981mm)	30" (762mm)
DW-S2.FL-363636	36" (915mm)	36" (915mm)	48" (1219mm)	45" (1143mm)	36" (915mm)
DW-S2.FL-364236	36" (915mm)	42" (1067mm)	42" (1067mm)	51" (1295mm)	36" (915mm)
DW-S2.FL-363648	36" (915mm)	36" (915mm)	48" (1219mm)	45" (1143mm)	48" (1218mm)
CUSTOM					

CUSTOM SIZES ALSO AVAILABLE. PLEASE CONTACT FOR MORE INFORMATION. LAYOUT IS FOR SAMPLE PURPOSES ONLY

Notes:

••••NOT FOR CONSTRUCTION PURPOSES. ALL INFORMATION SUBJECT TO CHANGE, CONTACT FOR MOST UP TO DATE INFORMATION••••

SPECIFICATIONS

CODE COMPLIANCE:
B44/ASME A17.1
MAXIMUM CAPACITY:
UP TO 500lbs (227 Kg)
MAXIMUM PLATFORM SIZE:
1 CUBIC METER / 35.32 CUBIC FEET
MAXIMUM TRAVEL (T):
22 FEET (6.7m)
PIT DEPTH (P):
30" (762mm) MINIMUM
MINIMUM OVERHEAD REQUIRED (OH):
REQUEST INFORMATION
MAXIMUM TRAVEL SPEED:
30 ft./min (0.15m/s)
DRIVE:
ROLLER CHAIN
LANDING DOOR TYPE:
VERTICAL BI-PARTING
DOOR FINISH OPTIONS:
STAINLESS STEEL/PAINTED STEEL
CAB FINISH OPTIONS:
STAINLESS STEEL/PAINTED STEEL
HOISTWAY CONTRUCTION TYPE:
STUD AND DRYWALL/CONCRETE/MASONRY
ADDITIONAL FEATURES:
1 SHELF INCLUDED

FOR INFORMATION AND SALES CONTACT:

CITI ELEVATOR INC.

WEB: WWW.CITIELEVATOR.COM

EMAIL: SALES.INFO@CITIELEVATOR.COM

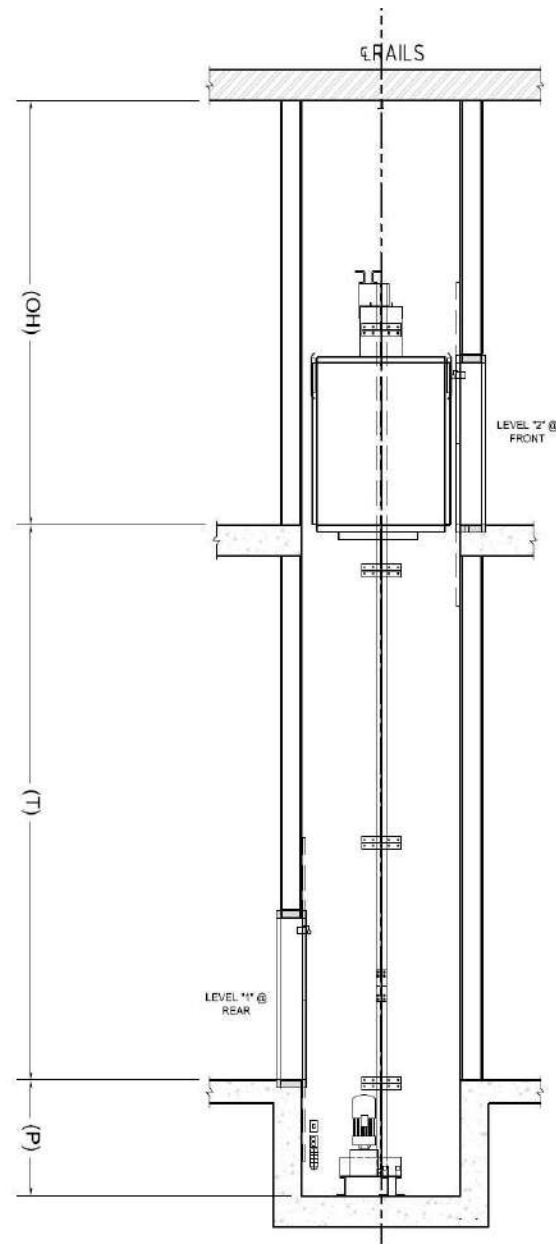
USA: (716) 513 - 9535

CAN: (416) 900 - 6974



DELTA-C COMMERCIAL DUMBWAITER - THRU CAR FLOOR LOADING

ELEVATION VIEW: STYLE TWO FLOOR LOADING



SPECIFICATIONS

CODE COMPLIANCE:

B44/ASME A17.1

MAXIMUM CAPACITY:

UP TO 500lbs (227 Kg)

MAXIMUM PLATFORM SIZE:

1 CUBIC METER / 35.32 CUBIC FEET

MAXIMUM TRAVEL (T):

22 FEET (6.7m)

PIT DEPTH (P):

30" (762mm) MINIMUM

MINIMUM OVERHEAD REQUIRED (OH):

REQUEST INFORMATION

MAXIMUM TRAVEL SPEED:

30 ft./min (0.15m/s)

DRIVE:

ROLLER CHAIN

LANDING DOOR TYPE:

VERTICAL BI-PARTING

DOOR FINISH OPTIONS:

STAINLESS STEEL/PAINTED STEEL

CAB FINISH OPTIONS:

STAINLESS STEEL/PAINTED STEEL

HOISTWAY CONTRUCTION TYPE:

STUD AND DRYWALL/CONCRETE/MASONRY

ADDITIONAL FEATURES:

1 SHELF INCLUDED

FOR INFORMATION AND SALES CONTACT:

CITI ELEVATOR INC.

WEB: WWW.CITIELEVATOR.COM

EMAIL: SALES.INFO@CITIELEVATOR.COM

USA: (716) 513 - 9535

CAN: (416) 900 - 6974

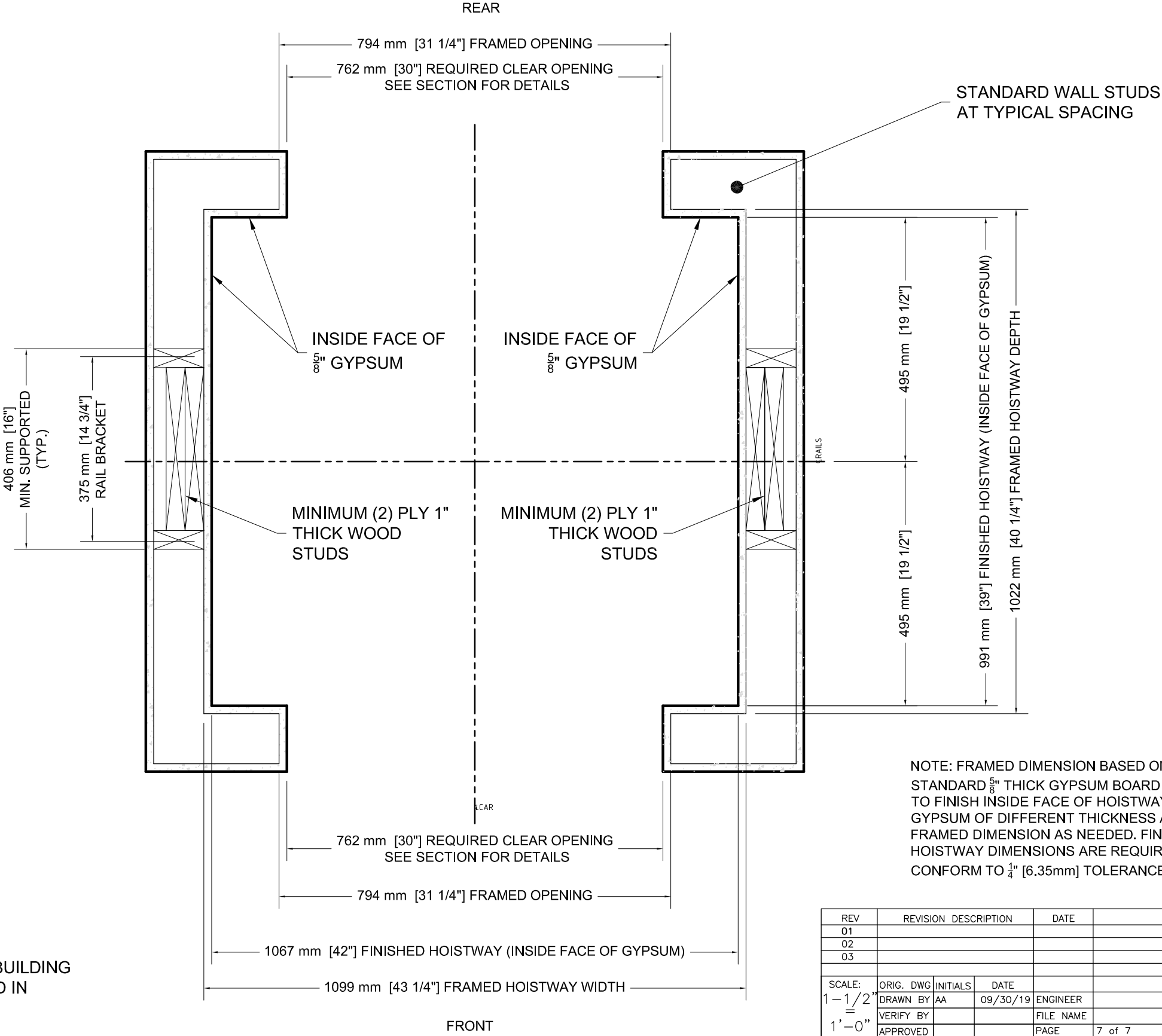
CUSTOM SIZES ALSO AVAILABLE. PLEASE CONTACT FOR MORE INFORMATION. LAYOUT DRAWING IS FOR SAMPLE PURPOSES ONLY

Notes:

••••NOT FOR CONSTRUCTION PURPOSES. ALL INFORMATION SUBJECT TO CHANGE, CONTACT FOR MOST UP TO DATE INFORMATION••••



ATTENTION: FRAMER
SAMPLE INFORMATION ONLY



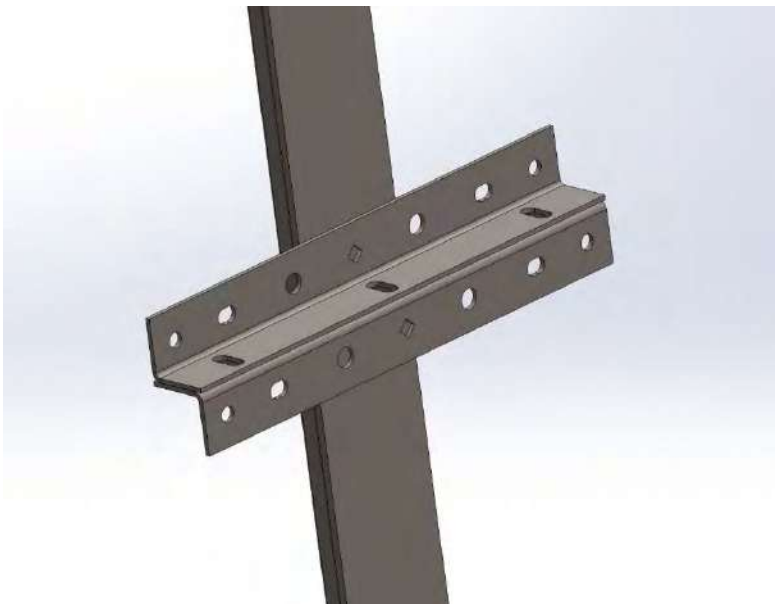
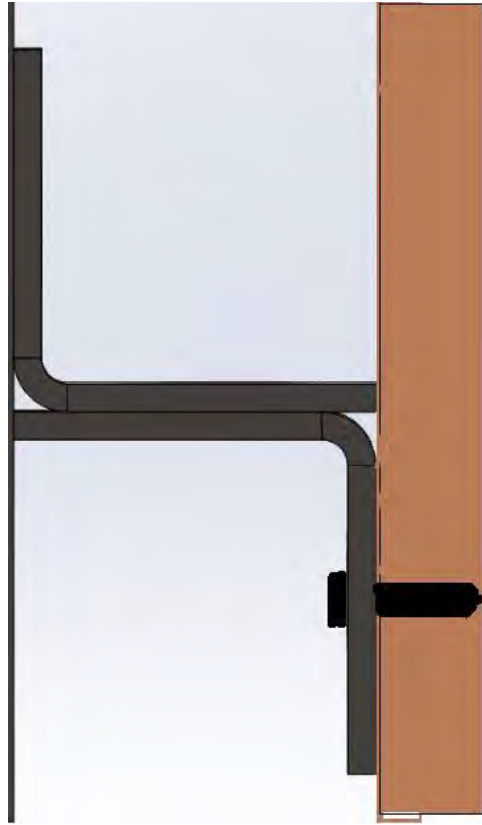
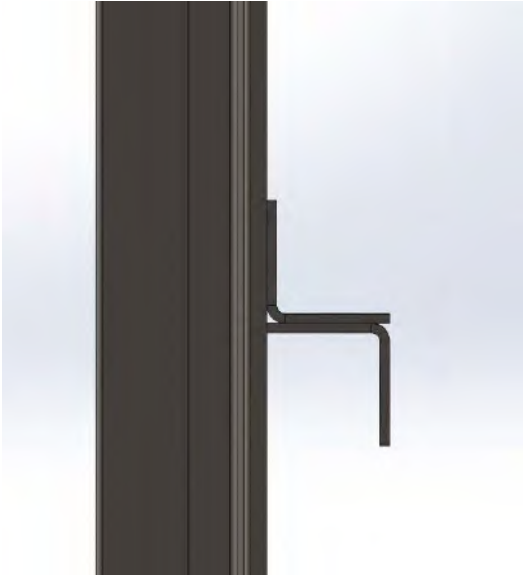
NOTE: ALL WALLS TO BE ENGINEERED (BY BUILDING ENGINEER) TO SUPPORT THE LOADS LISTED IN APPROVED PROJECT DRAWINGS

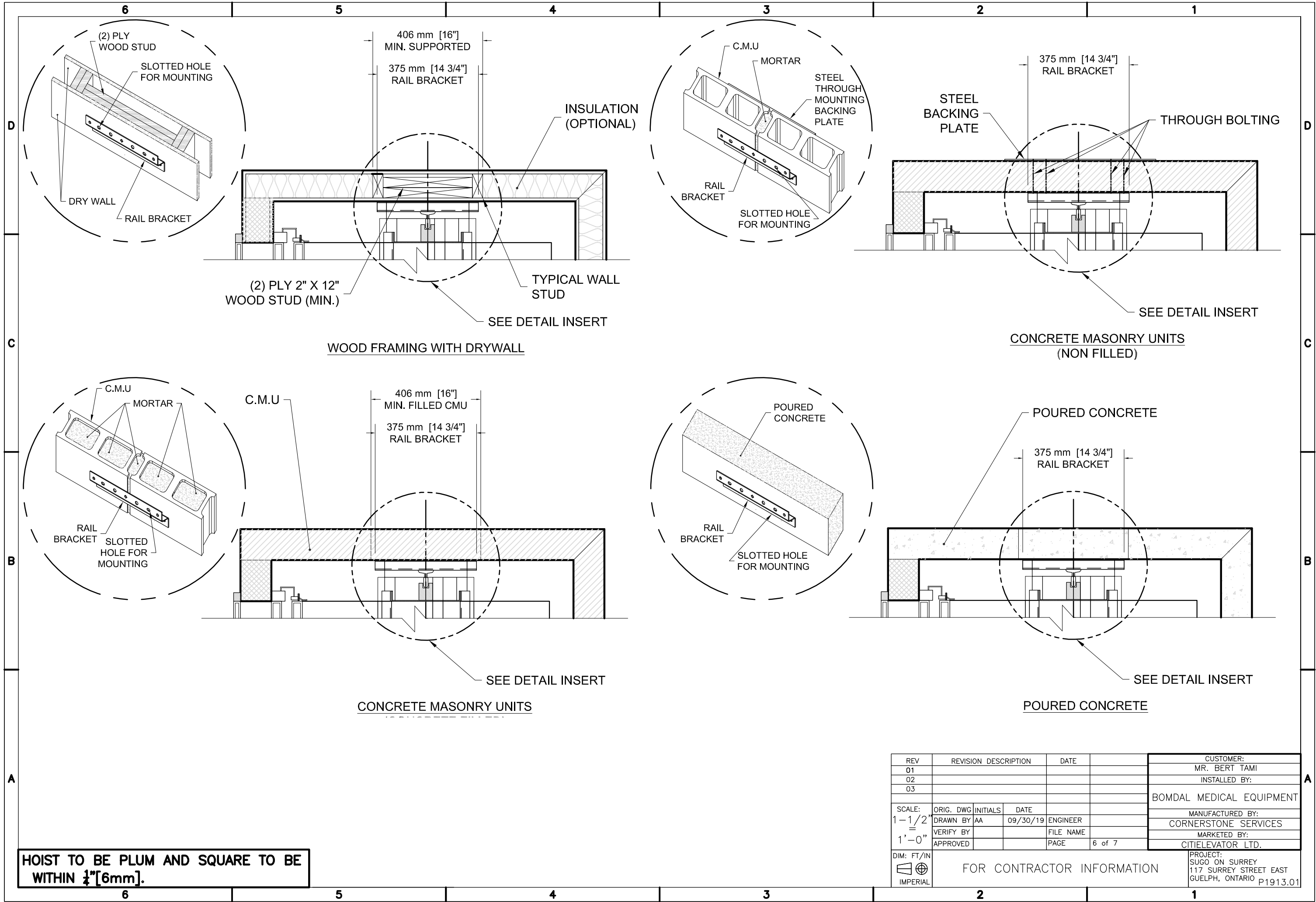
HOIST TO BE PLUM AND SQUARE TO BE WITHIN 1/4"[6mm].

NOTE: FRAMED DIMENSION BASED ON STANDARD 5/8" THICK GYPSUM BOARD USED TO FINISH INSIDE FACE OF HOISTWAY. IF USIG GYPSUM OF DIFFERENT THICKNESS ADJUST FRAMED DIMENSION AS NEEDED. FINISHED HOISTWAY DIMENSIONS ARE REQUIRED TO CONFORM TO 1/4" [6.35mm] TOLERANCE.

REV	REVISION DESCRIPTION			DATE	CUSTOMER:	
01					MR. BERT TAMI	
02					INSTALLED BY:	
03					BOMDAL MEDICAL EQUIPMENT	
SCALE: 1 - 1/2" = 1' - 0"		ORIG. DWG	INITIALS	DATE	MANUFACTURED BY:	
		DRAWN BY	AA	09/30/19	ENGINEER	
		VERIFY BY			FILE NAME	
		APPROVED			PAGE	
DIM: FT/IN IMPERIAL		FOR FRAMER INFORMATION				PROJECT: SUGO ON SURREY 117 SURREY STREET EAST GUELPH, ONTARIO P1913.01

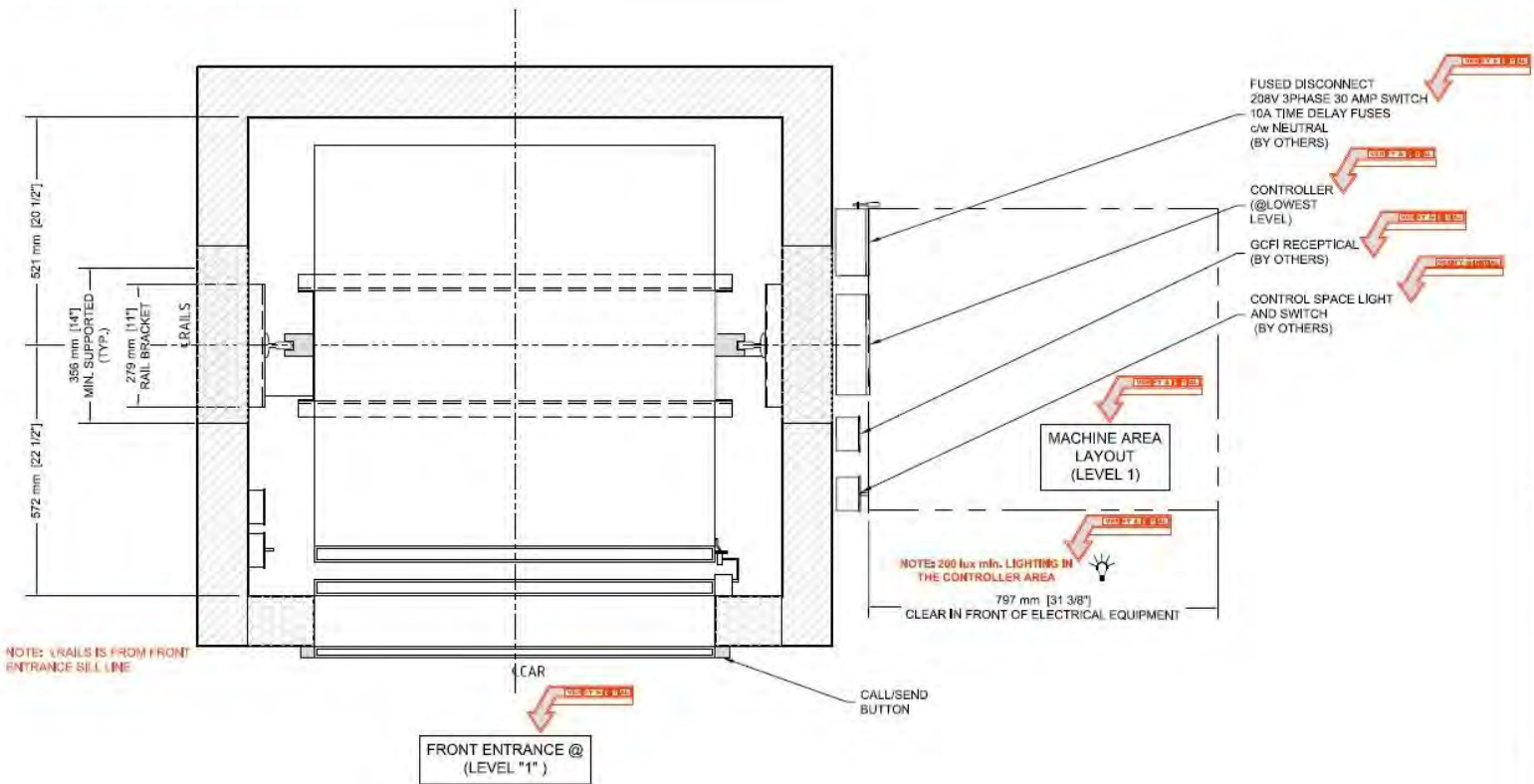
Rail Bracket attachment



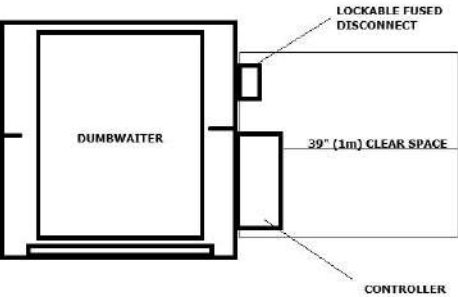


SAMPLE MACHINE AREA LAYOUT

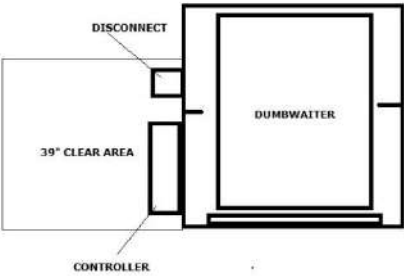
SAMPLE MACHINE AREA LAYOUT



MR- RIGHT

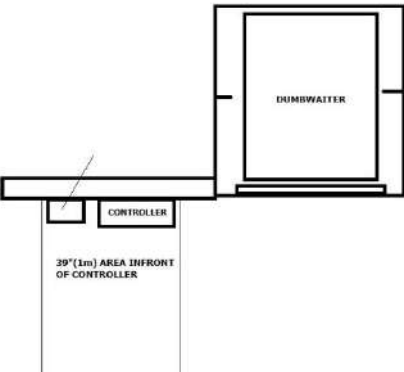


MACHINE AREA LEFT



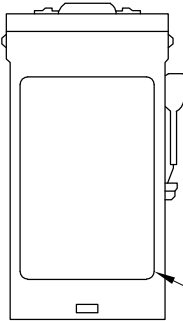
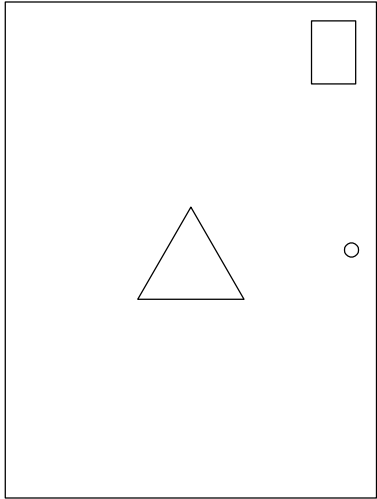
MACHINE AREA BACK

MACHINE AREA REMOTE



ATTENTION: ELECTRICAL SAMPLE INFORMATION ONLY

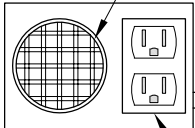
CONTROLLER WALL LOCATION



LOCKABLE
FUSED
DISCONNECT

CONTROLLER

HOISTWAY MACHINE REQUIREMENTS




LOW PROFILE PIT LIGHT

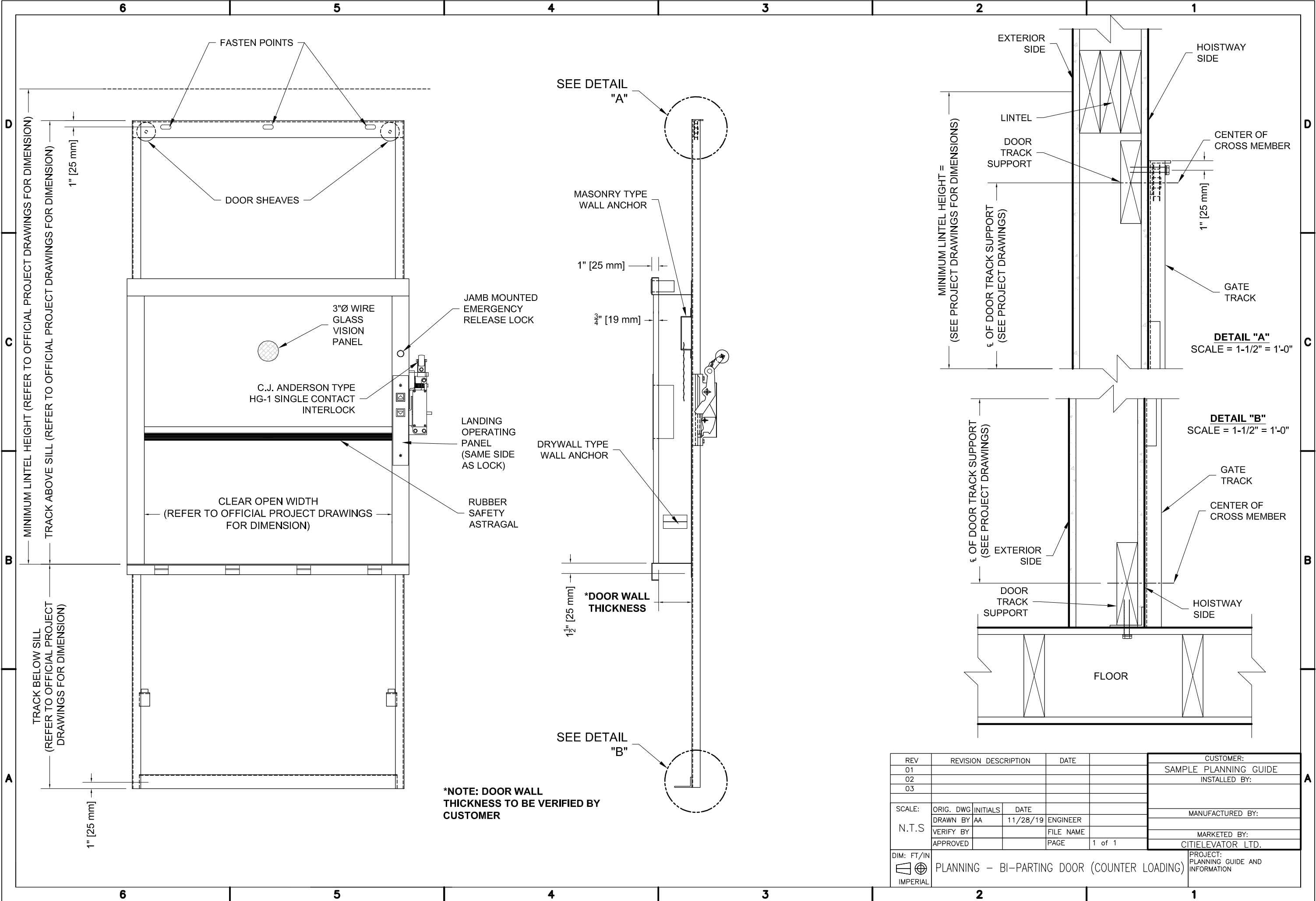
SWITCH

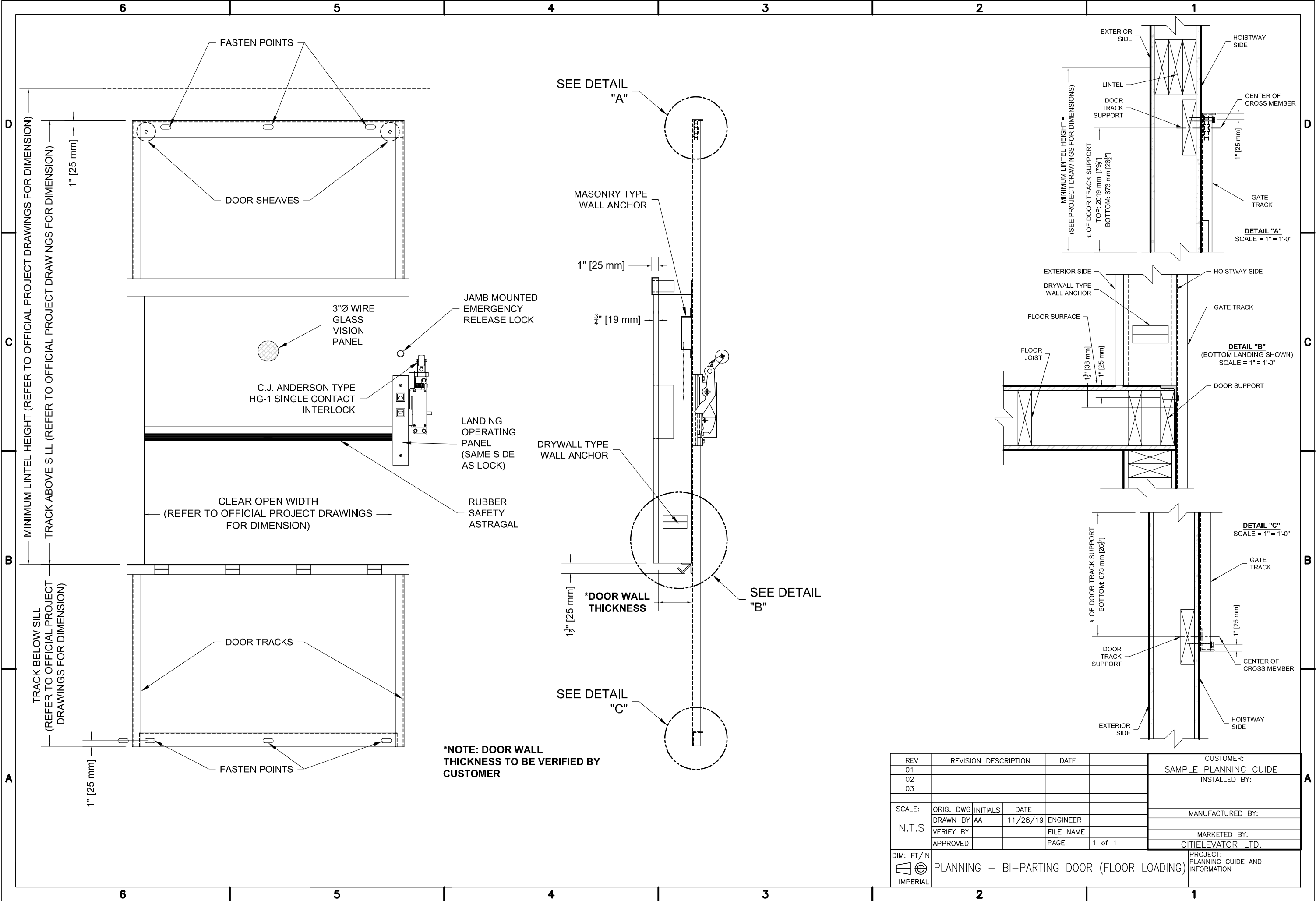
GFCI PLUG

NOTE: ELECTRICAL REQUIREMENTS TO BE CONFIRMED
BY ELECTRICAL ENGINEER AND IN ACCORDANCE WITH
ALL LOCAL GOVERNING CODES

HOIST TO BE PLUM AND SQUARE TO BE WITHIN $\frac{1}{4}$ "[6mm].

REV	REVISION DESCRIPTION			DATE	CUSTOMER:	
01					PLANNING GUIDE	
02					INSTALLED BY:	
03					ELEVATOR COMPANY	
SCALE:	ORIG. DWG	INITIALS	DATE		MANUFACTURED BY:	
1 - 1/2"	DRAWN BY	AA	10/17/19	ENGINEER	CORNERSTONE SERVICES	
=	VERIFY BY			FILE NAME	MARKETED BY:	
1' - 0"	APPROVED			PAGE	CITELEVATOR LTD.	
DIM: FT/IN					PROJECT:	
	PLANNING - FOR ELECTRICAL INFORMATION				SAMPLE ONLY	
IMPERIAL						







PRODUCT – DUMBWAITER – HOISTWAY (Model Type – DW-H)

STANDARDS

To establish a standard for tendering purposes, the drawings and Specifications are based on CITI Elevator (See Model Below) .Tel:416-900-6974(CAN)TEL:716-513-9535(USA)
sales@citielelevator.com, www.citielelevator.com

DUMBWAITER(S) Model: (Select One of the following)

Model: Click here to enter text.

Capacity: Click here to enter text.

Code: ASME A17.1/CSA B-44

Loading Level: Choose an item.

Total Travel: Click here to enter text.

Of Stops: Click here to enter text.

Overhead Click here to enter text.

Pit Depth: Click here to enter text.

Hoistway dimensions: Click here to enter text.

Warranty:

Car Inside dimensions: Click here to enter text.

Cab Style:Click here to enter text.

Cab Walls Click here to enter text.

Cab Flooring: Click here to enter text.

Cab Ceiling: Click here to enter text.

Cab lighting:Click here to enter text.

Hall Calls: Click here to enter text.

Car Controls: Click here to enter text.

Cab Gates:Click here to enter text.

Landing doors: Click here to enter text.

Car Operation: Click here to enter text.

Speed: Click here to enter text.

Power Supply: Click here to enter text.

Lighting Power: 120V- 60Hz

Safety Devices: Overs Speed restrictor

Emergency lowering. Click here to enter text.

CITI Elevator offers a complete line of competitively priced Lift & Elevators to provide service for building(s).

CITI Lifts & Elevators come in different sizes and speeds in order to satisfy your every requirement.

A full range of cab and standard entrances options are available on all CITI Lifts and Elevators.